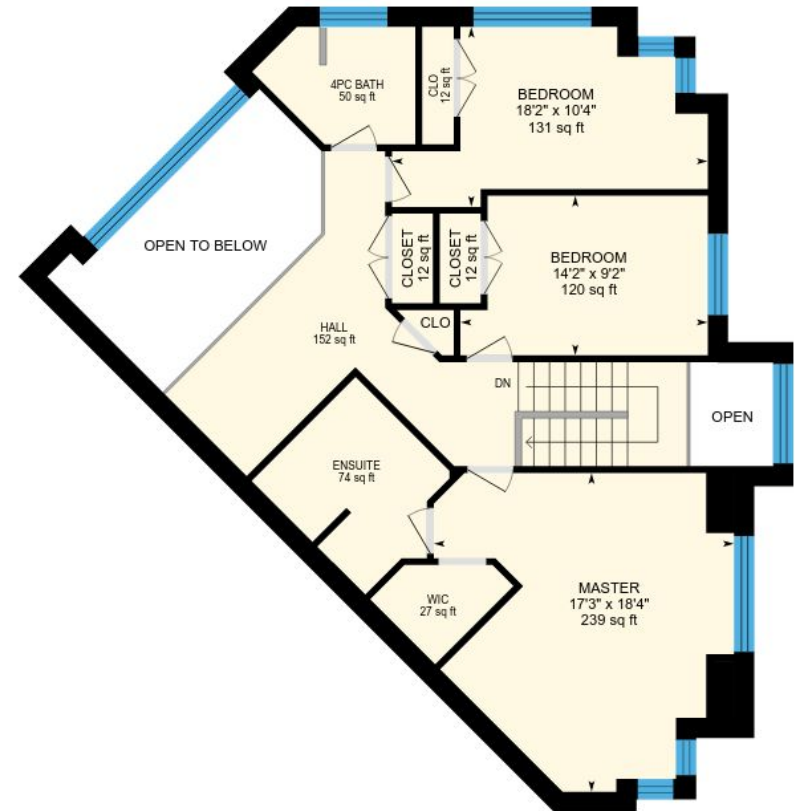
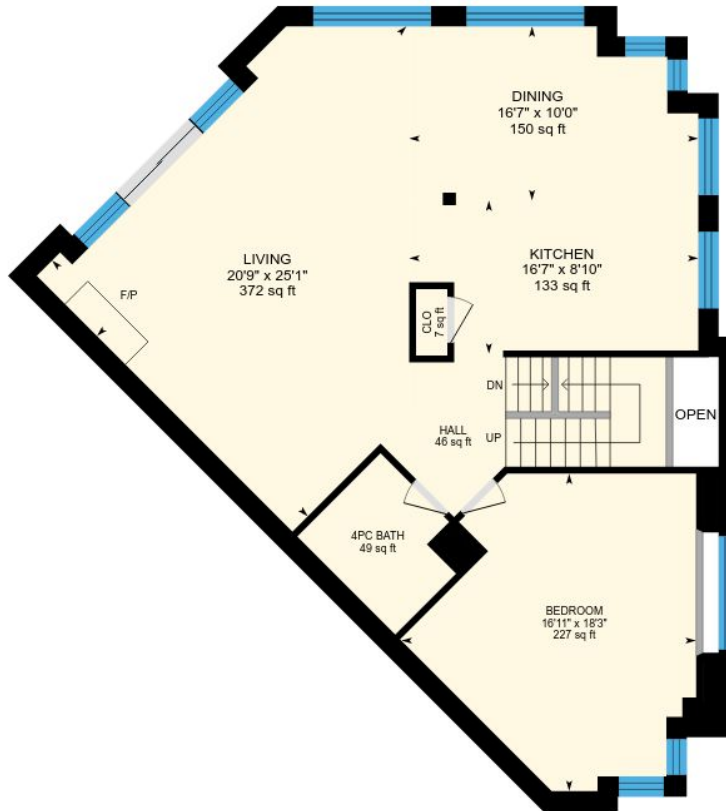
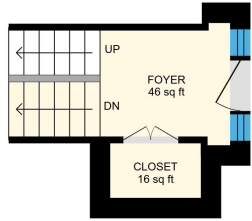


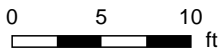
Unit 2 228 Blueski George Crescent, The Blue Mountains, ON

Total Exterior Area Above Grade 2530 sq ft (Main Building)



Main Floor

Exterior Area 138 sq ft



1st Floor

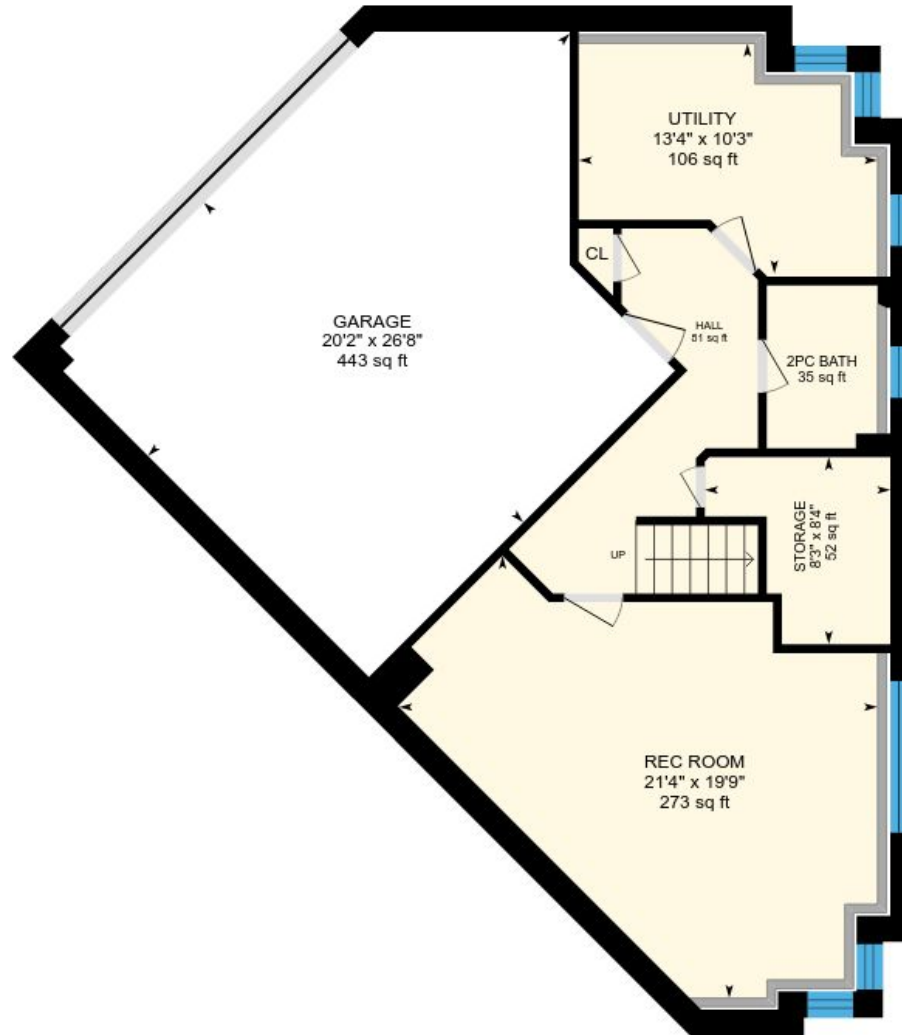
Exterior Area 1259 sq ft

2nd Floor

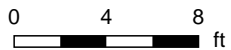
Exterior Area 1132 sq ft

PREPARED: Feb, 2018

Unit 2 228 Blueski George Crescent, The Blue Mountains, ON



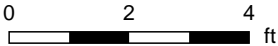
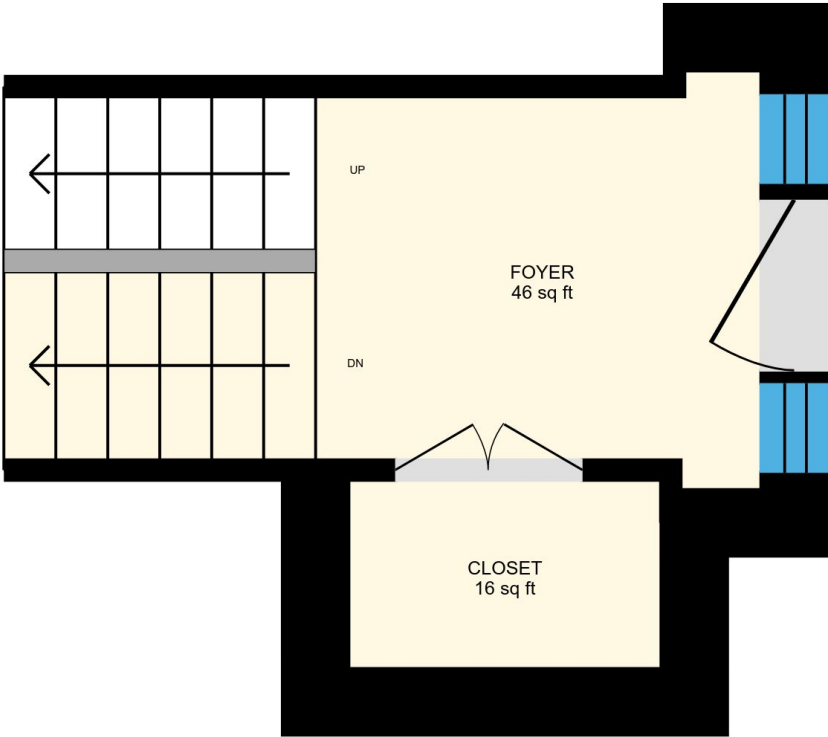
Basement (Below Grade)
Exterior Area 750 sq ft



PREPARED: Feb, 2018

Unit 2 228 Blueski George Crescent, The Blue Mountains, ON

Main Floor Total Exterior Area 138 sq ft
Total Interior Area 81 sq ft

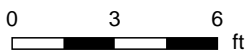
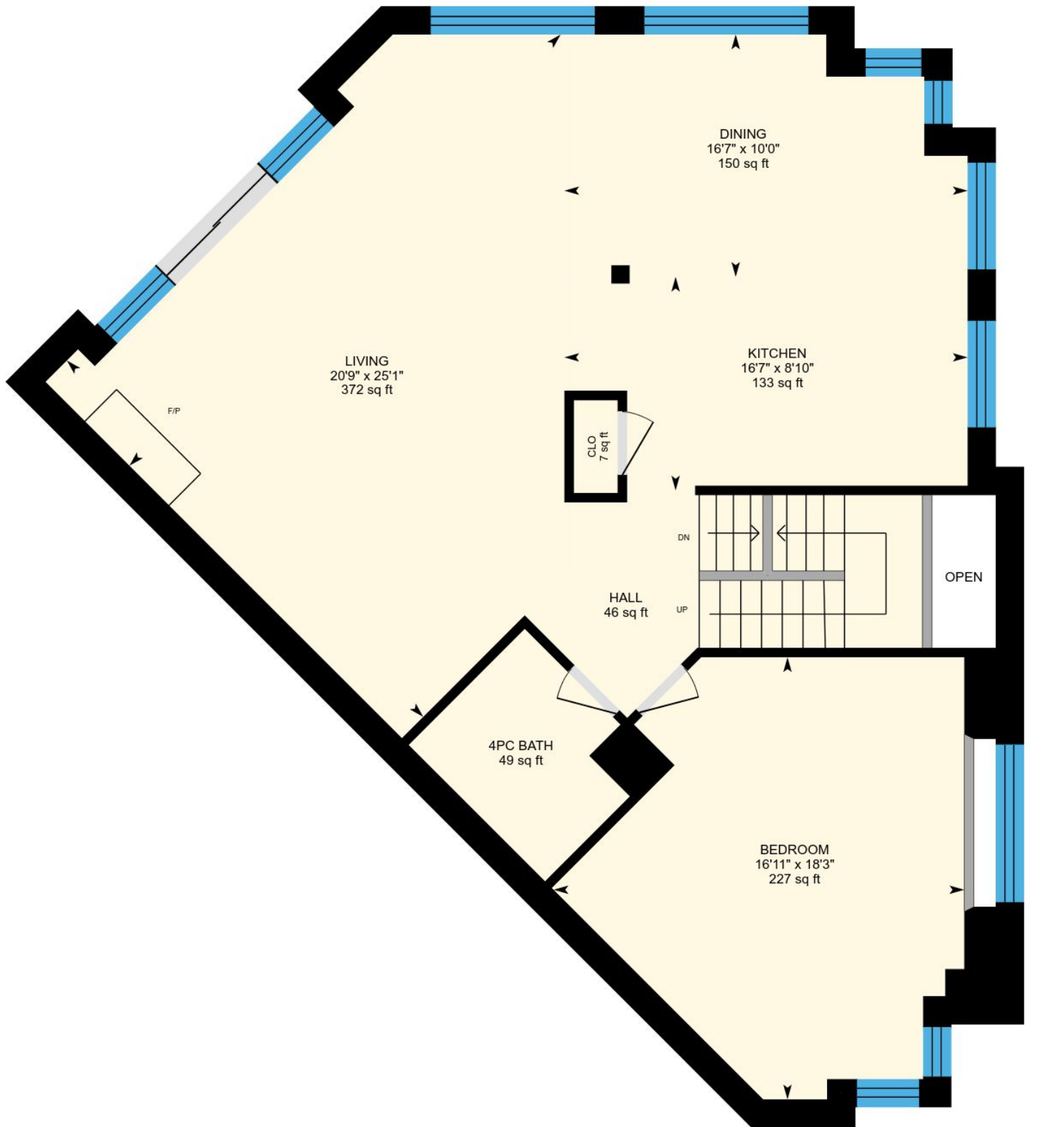


PREPARED: Feb, 2018

Colored regions are included in total floor area. All room dimensions and floor areas must be considered approximate and are subject to independent verification. For method of measurement please see <https://youriguide.com/measure/>.

Unit 2 228 Blueski George Crescent, The Blue Mountains, ON

1st Floor Total Exterior Area 1259 sq ft
Total Interior Area 1079 sq ft

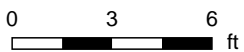
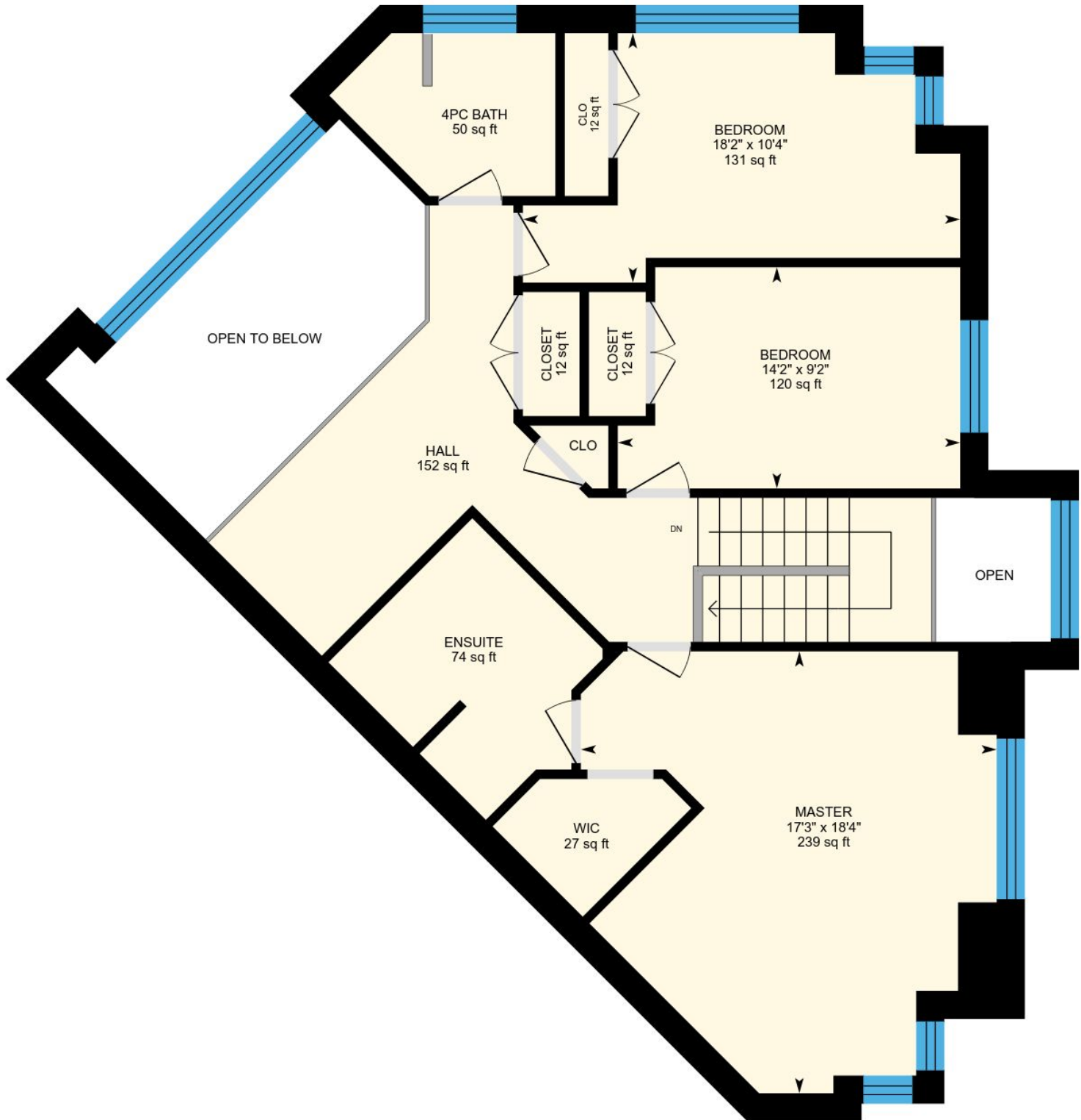


PREPARED: Feb, 2018



Unit 2 228 Blueski George Crescent, The Blue Mountains, ON

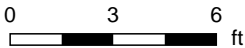
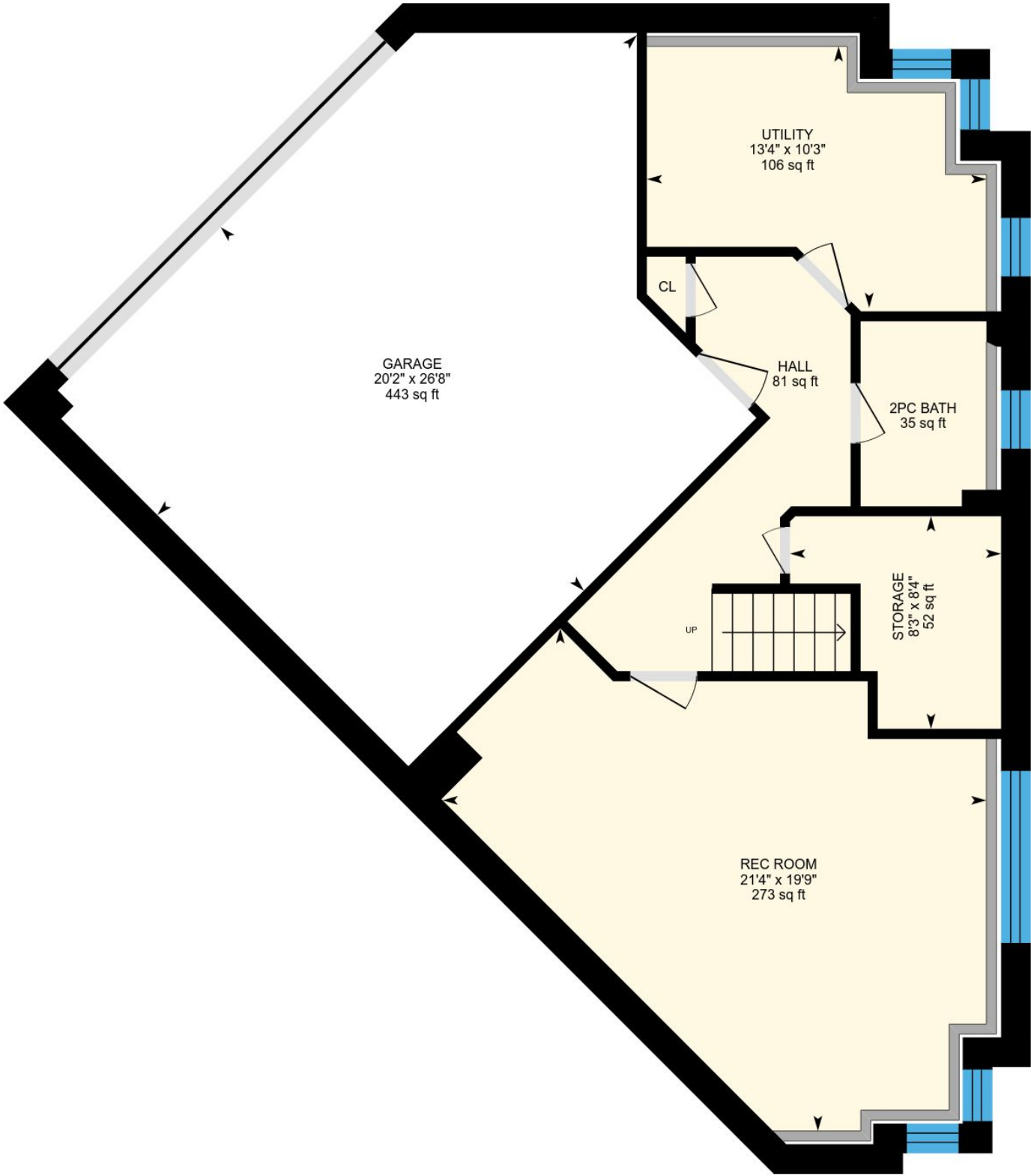
2nd Floor Total Exterior Area 1132 sq ft
Total Interior Area 961 sq ft



PREPARED: Feb, 2018

Unit 2 228 Blueski George Crescent, The Blue Mountains, ON

Basement Total Exterior Area 750 sq ft
Total Interior Area 597 sq ft



PREPARED: Feb, 2018



Colored regions are included in total floor area. All room dimensions and floor areas must be considered approximate and are subject to independent verification. For method of measurement please see <https://youriguide.com/measure/>.

Unit 2 228 Blueski George Crescent, The Blue Mountains, ON

Property Details

Room Measurements

Room dimensions are largest width and length, parts of room may be smaller.

Main Building

MAIN FLOOR

Foyer: 46 sq ft

1ST FLOOR

Bedroom: 16'11" x 18'3" | 227 sq ft

4pc Bath: 49 sq ft

Living: 20'9" x 25'1" | 372 sq ft

Dining: 16'7" x 10'0" | 150 sq ft

Kitchen: 16'7" x 8'10" | 133 sq ft

Hall: 46 sq ft

2ND FLOOR

Master: 17'3" x 18'4" | 239 sq ft

Bedroom: 14'2" x 9'2" | 120 sq ft

4pc Bath: 50 sq ft

Ensuite: 74 sq ft

Hall: 152 sq ft

Bedroom: 18'2" x 10'4" | 131 sq ft

BASEMENT

Utility: 13'4" x 10'3" | 106 sq ft

Rec Room: 21'4" x 19'9" | 273 sq ft

Hall: 81 sq ft

Garage: 20'2" x 26'8" | 443 sq ft

2pc Bath: 35 sq ft

Floor Area Information

For explanation of floor area calculations and method of measurement please see <http://youriguide.com/measure/>

Main Building

Building Perimeter Wall Thickness: 14 in

MAIN FLOOR

Interior Area: 81 sq ft

Perimeter Wall Length: 49 ft

Exterior Area: 138 sq ft

1ST FLOOR

Interior Area: 1079 sq ft

Perimeter Wall Length: 155 ft

Exterior Area: 1259 sq ft

2ND FLOOR

Interior Area: 961 sq ft

Perimeter Wall Length: 147 ft

Exterior Area: 1132 sq ft

BASEMENT (Below Grade)

Interior Area: 597 sq ft

Perimeter Wall Length: 131 ft

Exterior Area: 750 sq ft

Total Above Grade Floor Area

Main Building Interior: 2121 sq ft

Main Building Exterior: 2530 sq ft